



**eka<sup>®</sup>**

HOT ASHALT,  
**COLD CAUGHT!**

[www.eka-asphalt.de](http://www.eka-asphalt.de)



ABOUT US

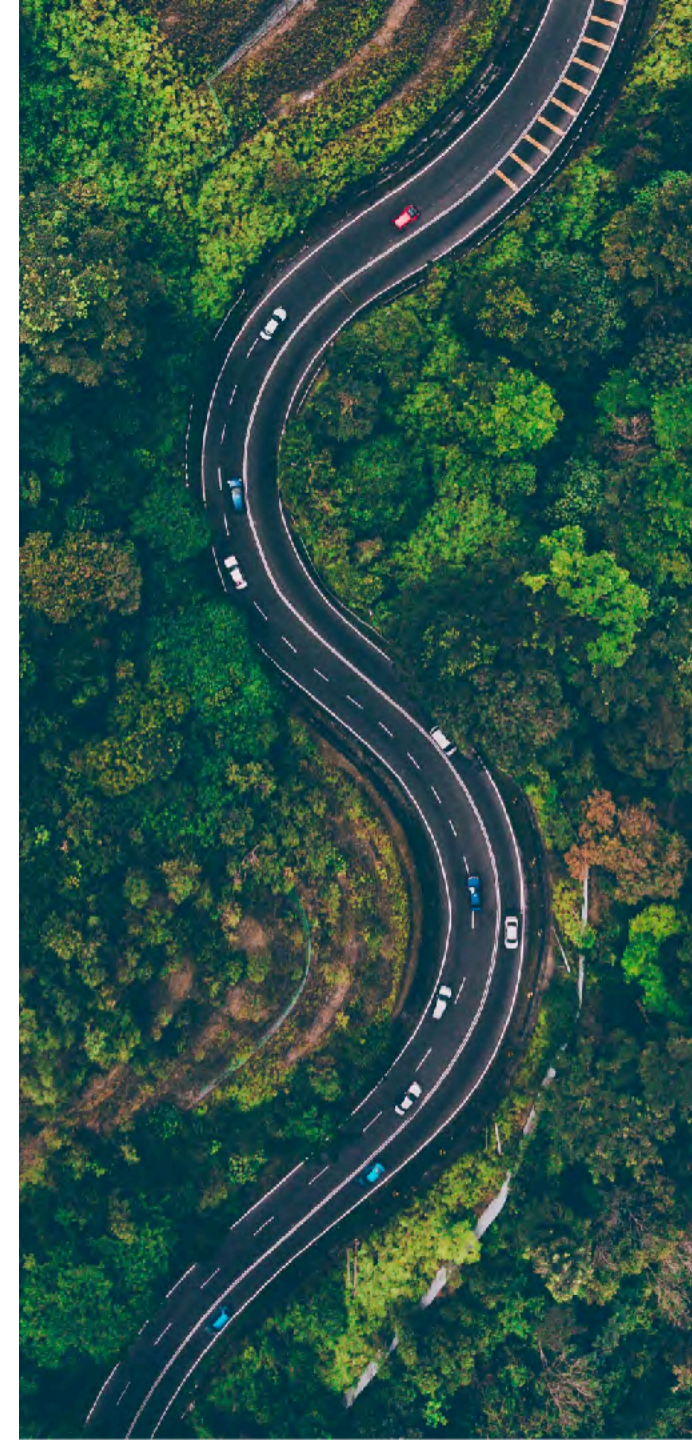


# Welcome

We are the licensed manufacturer and exclusive supplier of a **patented and CE-certified, durable repair asphalt in the following European countries: Germany, the Netherlands, Austria, Switzerland, Luxembourg, Belgium as well as Poland.**

PRODUCT-  
PRESENTATION

---



WHO WE ARE



# Meet the heads, behind the **eka GmbH.**

Alone you are strong,  
together unbeatable.

**For optimal solution concepts  
you need a team that is a  
master of its craft.**

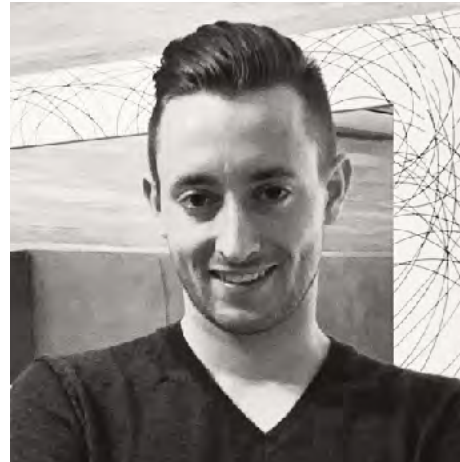


**René Pommerening**

---

**Managing Director**

As a graduate engineer in mechanical engineering (FH), he gained over 20 years of experience in the automotive industry.



**Ricardo Pommerening**

---

**Sales Manager**

As a graduate biologist (University of Cologne), he uses his knowledge to lead our highly motivated sales team.



**Johannes Stengl**

---

**Managing Director**

As a graduate in banking management (ADG), he can look back on more than 40 years of successful work in the financial services and consulting industry.





WHERE WE COME FROM



## Our history

# Business Intention

**Company HQ:** Neuenkirchen - Germany

Founded in April 2022

**Core-Business:** licensed manufacturer and exclusive supplier of repair asphalt for the european area (D, NL, A, CH, BE, LU, PL)

**Current Production Facilities:**

Murcia, Madrid, Huelva, Ourense, Oviedo, Toledo, Cadiz, Badajoz (Stand 01/2024)



## OUR PRODUCT



Cold applicable,  
durable hot mix asphalt...  
**...does it exist?**

Why always orient the planning and execution of your road construction and maintenance work to the delivery availability and conditions of an asphalt plant, when it is also possible to be flexible and pragmatic?





## OUR PRODUCT



Whether repair actions of danger spots or potholes, for closing building site pits, for the filling of gaps of manhole covers or other paving components, or for the construction of complete gateways or roads - with the use of eka repair asphalt, produced in the hot process, you get the benefits of following:

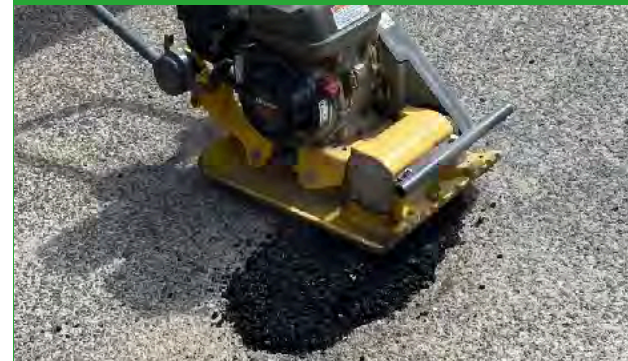


### LOWERED TEMPERATURE HOT ASPHALT

Our repair asphalt is produced by the conventional technology **at only about 120°C**, making a significant contribution to environmental protection.

### PERFECT GRANULOMETRY

The continuous sieve curve ensures an impermeability of 96% in the final compacted state. Leading into and not only in a temporary one.



### SAME FINAL MATERIAL PROPERTIES AS CONVENTIONAL HOT ASPHALT MIXTURE

### CE-CERTIFIED ( DIN EN 13108- 1 ) AND PATENTED MATERIAL







# Our Product



## IMMEDIATE RELEASE FOR ROAD TRAFFIC AFTER THE COMPACTION PROCESS

Result: direct cost reduction  
in personnel, machines and  
working time.



## CAN BE USED REGARDLESS OF WEATHER CONDITIONS

(even in rain and snow)



## OPTIMAL STORAGE PROPERTIES

Guaranteed storage time of  
at least 36 months (in dry  
storage). Opened material  
can also be stored again.





## TIME AND DISTANCE FLEXIBLE USE

Ready for immediate use (no mixing and no addition of water). If required, can also be installed directly on the hot base layer.



## APPROVAL ACCORDING TO HRepA AND GISCODE RepA10

According to HRepA, our product fulfils the technical characteristics of three KMGs (KMG-E, KMG-F, KMG-L). The ERGO Environmental Institute has certified our asphalt as GISCODE RepA10 solvent-free.

## SHORT DELIVERY TIMES

Its long storage time allows always a large stock, which result is, a delivery on shortest time.



## ECO-FRIENDLY PACKAGING

Eco-Bags made from recycled plastic, CO2 footprint only 2.24g per Eco-Bag.



More  
**Advantages**



## OUR PRODUCT



# Our most important **product features.**

Our product creates the best conditions for you,  
**to do a good job.**



### **EFFICIENCY**

Durable and re-storable  
repair asphalt



### **SUSTAINABILITY**

Repair asphalt with  
proactive environmental  
protection



### **EFFECTIVITY**

Fast & easy processing  
without added materials  
and preparatory works in  
advance.



### **AGILITY**

Shortest delivery times  
& immediate traffic  
release after  
completion of work.



### **DURABILITY**

Material storage  
up to 36 months



### **ACCURATE CALCULATION**

Exact calculation  
possibility  
of the material quantity



### **VERSATILITY**

From the smallest pothole  
to the complete road  
surface



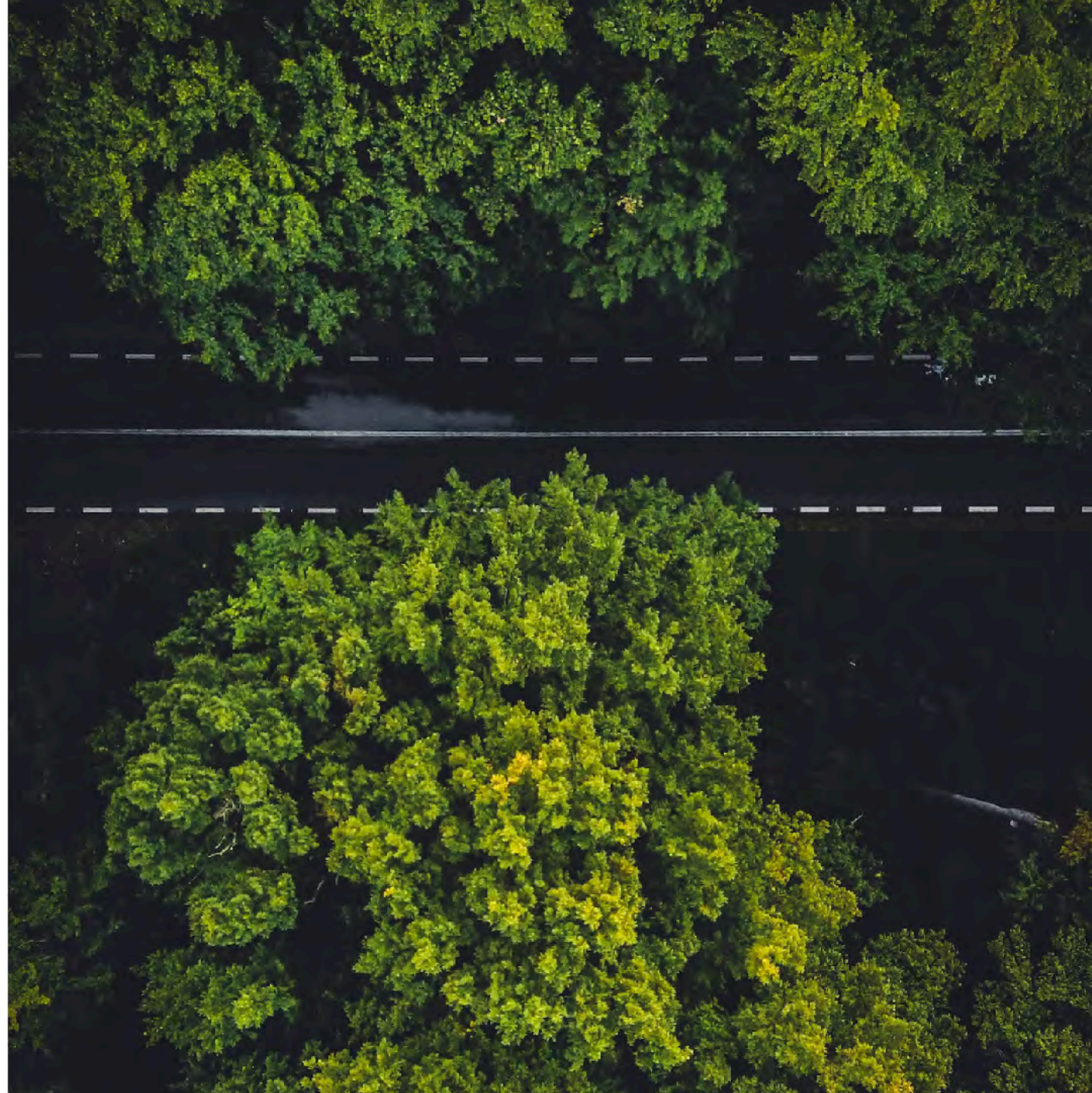
SUSTAINABILITY



## Our „green“ **technology.**

Sustainability, properly  
implemented, is an opportunity -

**for more growth, profitability  
and a higher company value.**





## SUSTAINABILITY



MATERIAL COMPETITION  
**CONTAMINATED WATER**



## Emulsifier and solvent-free repair asphalt (GISCODE RepA10).

RESULT:

**CAN BE USED WITHOUT CONCERN FOR THE ENVIRONMENT,  
AS NO GROUNDWATER POLLUTION OCCURS.**



eka repair asphalt  
**CLEAN WATER**







SUSTAINABILITY



## Eco-friendly packaging:



**ECO-BAGS MADE FROM RECYCLED & RECYCLABLE PLASTIC**



**CO2-FOOT PRINT 2,24G PER 15KG-ECO-BAG PACKAGING**  
(COMPARISON: PLASTIC BIN CA. 68G CO2)



## SUSTAINABILITY



**Reduced contamination**  
of work clothing and footwear.



**REDUCED WATER CONSUMPTION  
FOR CLEANING**



**REDUCED RAW MATERIAL CONSUMPTION  
FOR NEW WORKWEAR**





## APPLICATION AREAS



With us  
**versatility is written  
in capital letters!**

- **Permanent repairs and maintenance of roads** (e.g. of potholes, pits, e.g. for house connections, gas pipes, electrical lines).
- **Filling gaps adjacent to installation components** (such as manhole covers, etc.)
- **Manhole cover renovation work**
- **Ramps**
- **Construction sites with difficult access, which require a corresponding, individual, flexible adapted working time window, as well as material storage capability over several days on site.**





WHY USE OUR PRODUCT?



## 9 good reasons

We know exactly what our product can do.

**Now you do too!**

MATERIAL PROPERTIES	eka REPAIR ASPHALT	CONVENTIONAL HOT ASPHALT	COMPETITORS ASPHALT MIXTURES
MIN. 36 MONTHS STORABLE	✓	✗	✗
COLD STORABILITY	✓	✗	✓
RE-STORAGE OF RESIDUAL MATERIAL	✓	✗	✗
CAN BE USED REGARDLESS OF WEATHER CONDITIONS	✓	✗	✗
ALSO AVAILABLE IN SMALL DELIVERY QUANTITIES	✓	✗	✓
NO PREPARATION WORKS WORK NECESSARY	✓	✗	✗
IMMEDIATE RELEASE FOR ROAD TRAFFIC	✓	✗	✓
FINAL MATERIAL PROPERTY LIKE HOT ASPHALT	✓	✓	✗
SUSTAINABLE PACKAGING	✓	✗	✗



WHY USE OUR PRODUCT?



We spare  
**no comparison.**

We know exactly what  
our product can do.

**Now you do too!**

MATERIAL PROPERTIES	eka REPARATURASPHALT	WETTBEWERB REPARATURASPHALT
STORABILITY	MIN. 36 MONTHS	12 MONTHS
AMBIENT TEMPERATURE DURING PROCESSING	-20°C TO +50°C	+5 TO +35°C
CURE TIME	IMMEDIATELY PASSABLE (HIGH TRAFFIC LOAD ENSURES FASTER CURING)	10 - 20 DAYS
COMPACTION (IMPERMEABILITY)	96 %	max. 68 %
CE-CERTIFICATE	DIN EN 13108-1	NO REFERENCE KNOWN
CO2-FOOTPRINT PACKAGING	2,24g CO2 PER ECO-PACKAGING	32,20g CO2 PER PLASTIC BUCKET
FINAL ASPHALT CONDITION AND CHARACTER TRAIT	LIKE CONVENTIONAL HOT ASPHALT	INCOMPATIBLE
PATENT ES202031460U	BZW. PCT/BR2021/0PATENT ES202031460U BZW. PCT/BR2021/050272	-



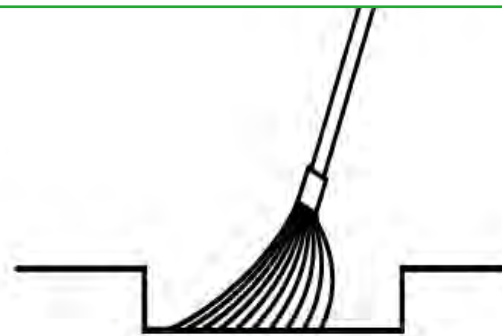
## PROCESSING INSTRUCTIONS



## OUR work steps.

Please note further information in the product data sheet, as well as in the DIN safety sheet, or under:

[www.eka-asphalt.de](http://www.eka-asphalt.de)



1

1. CLEAN UP



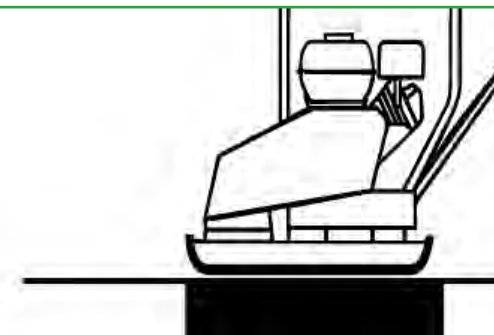
2

2. DISTRIBUTE



3

3. SPREAD MATERIAL



4

4. COMPACT &  
DIRECT TRAFFIC RELEASE



## PACKAGING SIZES



From smallest quantities  
to large orders –  
**everything is possible!**

15kg – ECO-BAGS



1.080kg – PACKED TO 72  
ECO-BAGS ON A PALLET



500kg – BIG BAG





## EXAMPLES OF USE



We show you,  
**how it looks like!**

On the following pages you will find  
reference pictures at our customers.







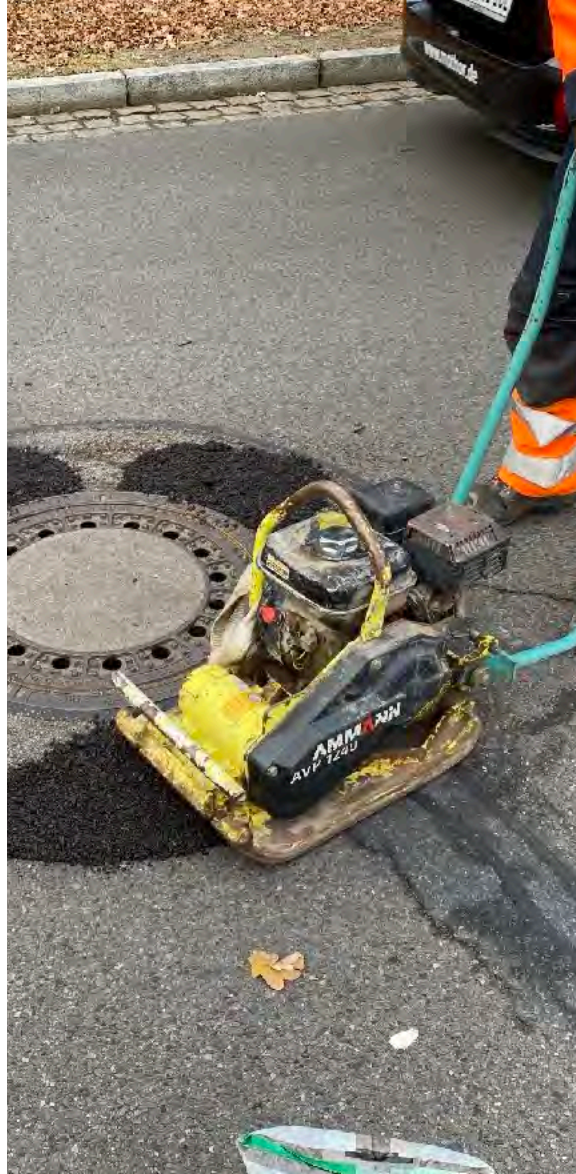








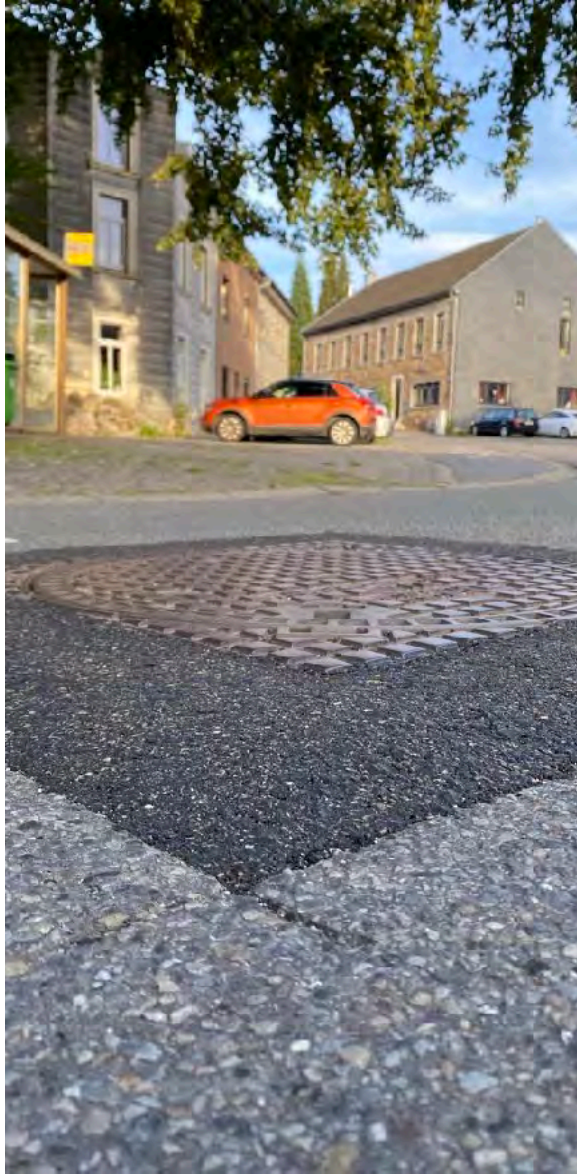












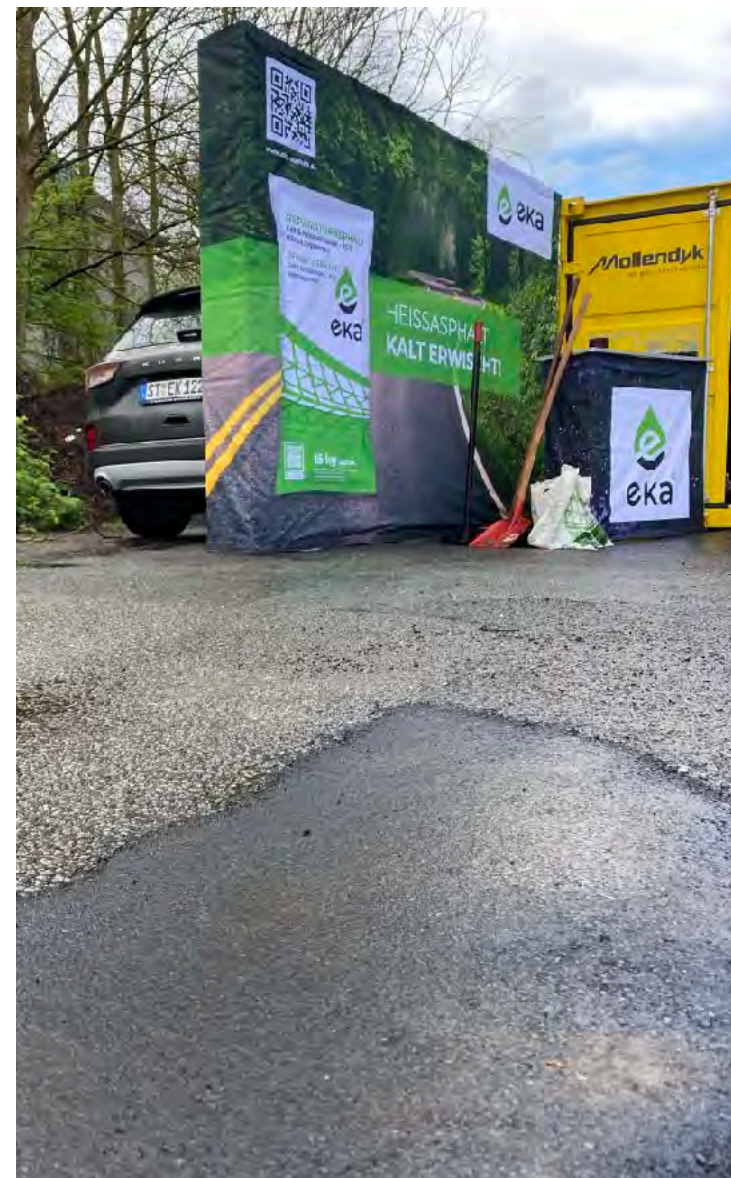




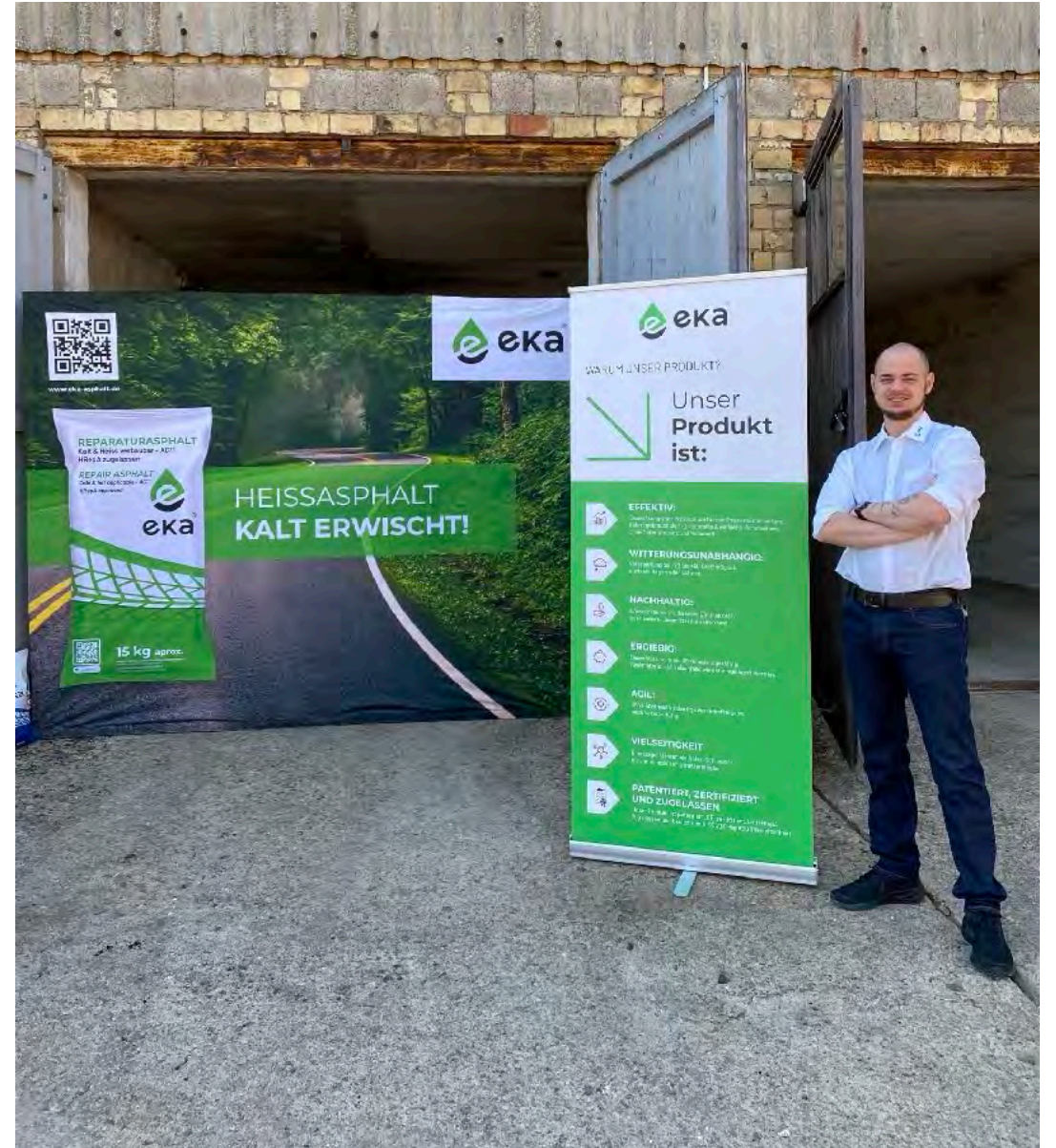
















## CONTACT DATA



### WEBSITE

---

[info@eka-asphalt.de](mailto:info@eka-asphalt.de)

[www.eka-asphalt.de](http://www.eka-asphalt.de)



### PHONE

---

**T** +49.59 73.736 99 30



### ADDRESS

---

eka GmbH  
Emsdettener Str. 45  
D-48485 Neuenkirchen







**Thank you**  
for your attention!

**WOULD YOU LIKE MORE INFORMATION  
ABOUT OUR PRODUCT?**

Feel free to contact us!

[www.eka-asphalt.de](http://www.eka-asphalt.de)