



eka[®]

HOT ASHALT,
COLD CAUGHT!

www.eka-asphalt.de

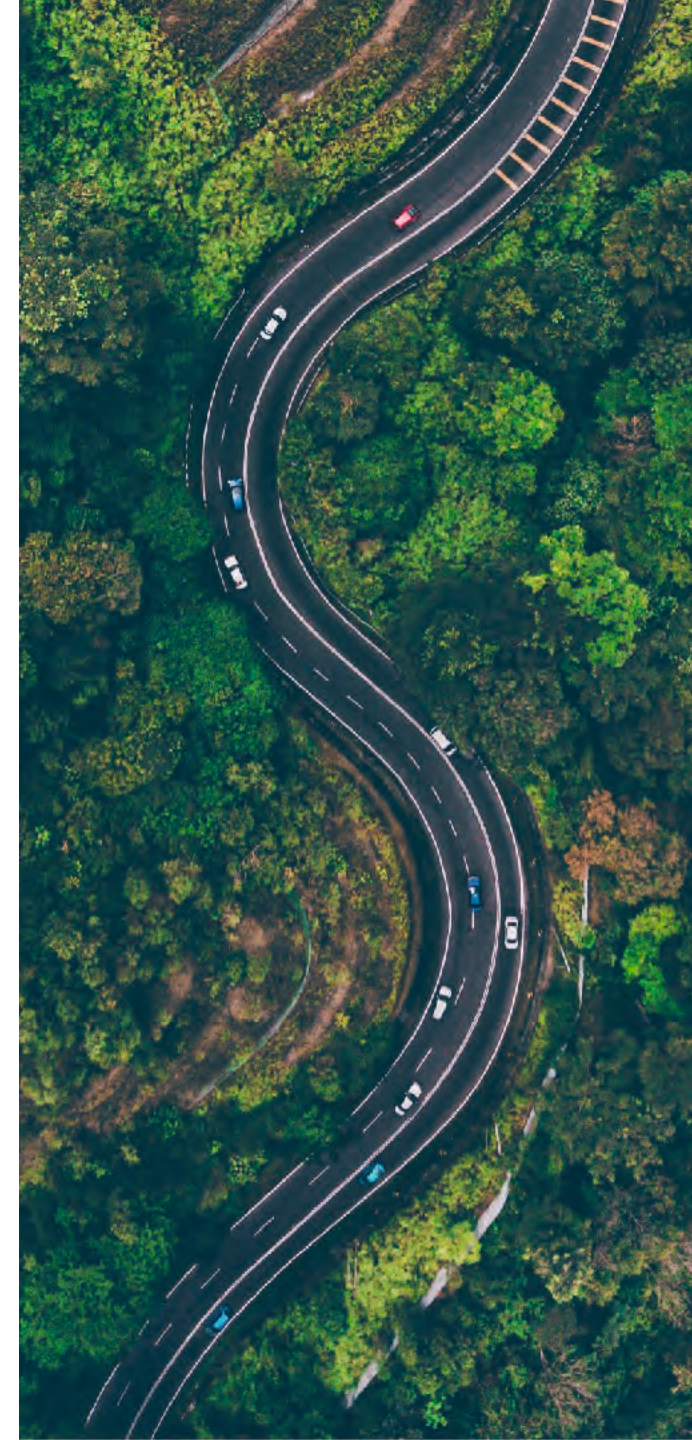
ABOUT US



Welcome

We are the licensed manufacturer and exclusive supplier of a **patented and CE-certified, durable repair asphalt in the German-speaking countries (DE, A, NL, CH).**

PRODUCT-
PRESENTATION



WHO WE ARE



Meet the heads, behind the **eka GmbH.**

Alone you are strong,
together unbeatable.

**For optimal solution concepts
you need a team that is a
master of its craft.**



René Pommerening

Managing Director

As a graduate engineer in mechanical engineering (FH), he gained over 20 years of experience in the automotive industry.



Ricardo Pommerening

Sales Manager

As a graduate biologist (University of Cologne), he uses his knowledge to lead our highly motivated sales team.



Johannes Stengl

Managing Director

As a graduate in banking management (ADG), he can look back on more than 40 years of successful work in the financial services and consulting industry.



WHERE WE COME FROM



Our history

Business Intention

Company HQ: Neuenkirchen - Germany

Founded in April 2022

Core-Business: licensed manufacturer and exclusive supplier of repair asphalt for the german speaking, european area (D, NL, CH, A)

Current Production Facilities:

Murcia, Madrid, Huelva, Ourense, Oviedo, Toledo, Cadiz, Badajoz (Stand 09/2022)

German production facilities in planning.



OUR PRODUCT



Cold applicable, durable hot mix asphalt... **...does it exist?**

Why always orient the planning and execution of your road construction and maintenance work to the delivery availability and conditions of an asphalt plant, when it is also possible to be flexible and pragmatic?



OUR PRODUCT



Whether repair actions of danger spots or potholes, for closing building site pits, for the filling of gaps of manhole covers or other paving components, or for the construction of complete gateways or roads - with the use of eka repair asphalt, produced in the hot process, you get the benefits of following:



LOWERED TEMPERATURE HOT ASPHALT

Our repair asphalt is produced by the conventional technology **at only about 120°C**, making a significant contribution to environmental protection.

PERFECT GRANULOMETRY

The continuous sieve curve ensures an impermeability of 96% in the final compacted state. Leading into and not only in a temporary one.



SAME FINAL MATERIAL PROPERTIES AS A HOT ASPHALT MIXTURE TYPE AC-11 and AC-5



CE-CERTIFIED (DIN EN 13108- 1) AND PATENTED MATERIAL





Our Product



IMMEDIATE RELEASE FOR ROAD TRAFFIC AFTER THE COMPACTION PROCESS

Result: direct cost reduction
in personnel, machines and
working time.



CAN BE USED REGARDLESS OF WEATHER CONDITIONS

(even in rain and snow)



OPTIMAL STORAGE PROPERTIES

Guaranteed storage time of
at least 36 months (in dry
storage). Opened material
can also be stored again.



TIME AND DISTANCE FLEXIBLE USE

Ready for immediate use (no mixing and no addition of water). If required, can also be installed directly on the hot base layer "ONE-STEP-READY-EVENT".



APPROVAL ACCORDING TO HRepA AND GISCODE RepA20

According to HRepA, our product fulfils the technical characteristics of three KMGs (KMG-E, KMG-F, KMG-L). The ERGO Environmental Institute has certified our asphalt as GISCODE RepA20 solvent-free.

More Advantages



ECO-FRIENDLY PACKAGING

Eco-Bags made from recycled plastic, CO2 footprint only 2.24g per Eco-Bag.

REPARATURASPHALT
Kalt & Heiss verbaubar
HRepA zugelassen

REPAIR ASPHALT
Cold & hot applicable
HRepA approved



OUR PRODUCT



Our most important **product features.**

Our product creates the best conditions for you, **to do a good job.**



EFFICIENCY

Durable and re-storable repair asphalt



SUSTAINABILITY

Repair asphalt with proactive environmental protection



EFFECTIVITY

Fast & easy processing without added materials and preparatory works in advance.



AGILITY

Immediate traffic release after completion of work.



DURABILITY

Material storage up to 36 months



ACCURATE CALCULATION

Exact calculation possibility of the material quantity



VERSATILITY

From the smallest pothole to the complete road surface

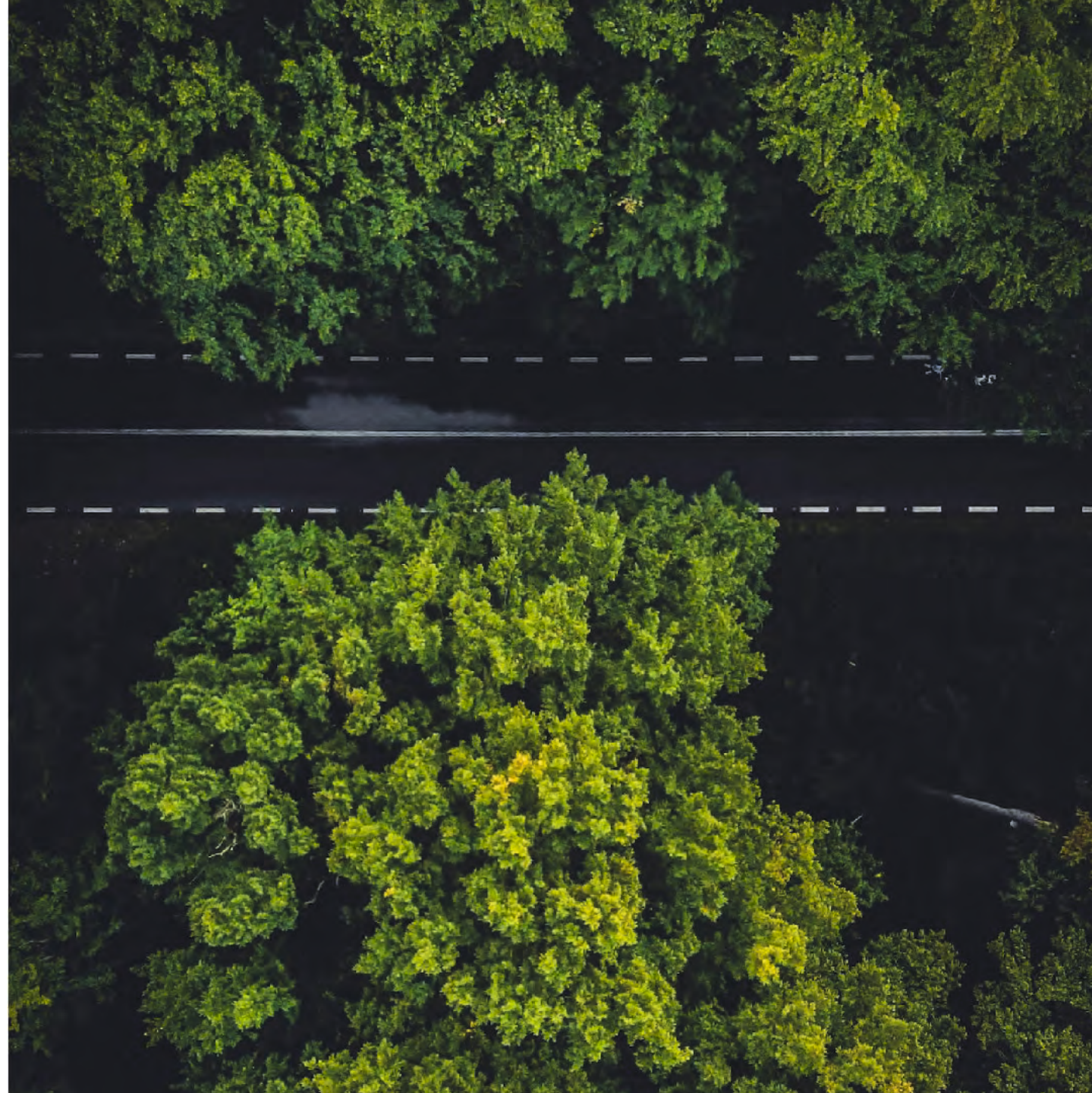
SUSTAINABILITY



Our „green“ **technology.**

Sustainability, properly
implemented, is an opportunity -

**for more growth, profitability
and a higher company value.**



SUSTAINABILITY



MATERIAL COMPETITION
CONTAMINATED WATER



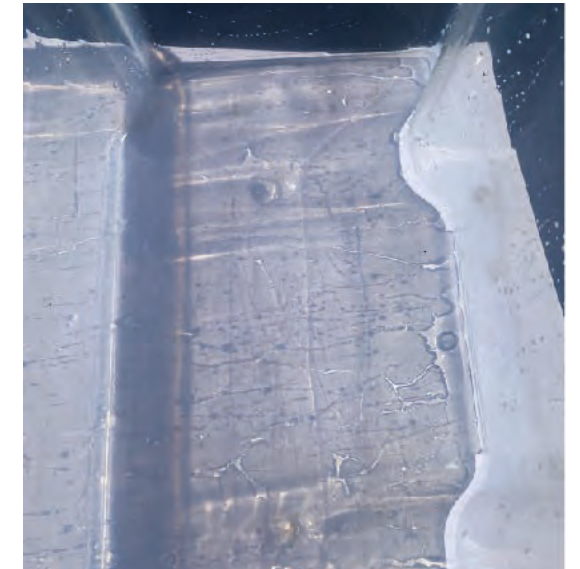
Emulsifier and solvent-free repair asphalt (GISCODE RepA20).

RESULT:

**CAN BE USED WITHOUT CONCERN FOR THE ENVIRONMENT,
AS NO GROUNDWATER POLLUTION OCCURS.**



eka repair asphalt
CLEAN WATER





SUSTAINABILITY



Eco-friendly packaging:



ECO-BAGS MADE FROM RECYCLED PLASTIC



CO2-FOOT PRINT 2,24G PER 15KG-ECO-BAG PACKAGING
(COMPARISON: PLASTIC BIN CA. 68G CO2)

SUSTAINABILITY



Reduced contamination
of work clothing and footwear.



**REDUCED WATER CONSUMPTION
FOR CLEANING**



**REDUCED RAW MATERIAL CONSUMPTION
FOR NEW WORKWEAR**



SUSTAINABILITY



Proactive environmental protection
through the addition of an additive*.

***RARx, a high-tech powder mixture consisting of old tyre rubber granulate and mineral additives.**

- THE NATURAL DECAY TIME OF A RUBBER TYRE IS ABOUT 850-1000 YEARS.
- REDUCED CONSUMPTION OF RAW MATERIALS



APPLICATION AREAS



With us
**versatility is written
in capital letters!**

- **Permanent repairs and maintenance of roads** (e.g. of potholes, pits, e.g. for house connections, gas pipes, electrical lines).
- **Filling gaps adjacent to installation components** (such as manhole covers, etc.)
- **Manhole cover renovation work**
- **Ramps**
- **Construction sites with difficult access, which require a corresponding, individual, flexible adapted working time window, as well as material storage capability over several days on site.**



WHY USE OUR PRODUCT?



9 good reasons

We know exactly what our product can do.

Now you do too!

MATERIAL PROPERTIES	eka REPAIR ASPHALT	CONVENTIONAL HOT ASPHALT	COMPETITORS ASPHALT MIXTURES
MIN. 36 MONTHS STORABLE	✓	✗	✗
COLD STORABILITY	✓	✗	✓
RE-STORAGE OF RESIDUAL MATERIAL	✓	✗	✗
CAN BE USED REGARDLESS OF WEATHER CONDITIONS	✓	✗	✗
ALSO AVAILABLE IN SMALL DELIVERY QUANTITIES	✓	✗	✓
NO PREPARATION WORKS NECESSARY	✓	✗	✗
IMMEDIATE RELEASE FOR ROAD TRAFFIC	✓	✗	✓
FINAL MATERIAL PROPERTY LIKE HOT ASPHALT AC-11 & AC-5	✓	✓	✗
SUSTAINABLE PACKAGING	✓	✗	✗

WHY USE OUR PRODUCT?



We spare
no
comparison.

We know exactly what
our product can do.

Now you do too!

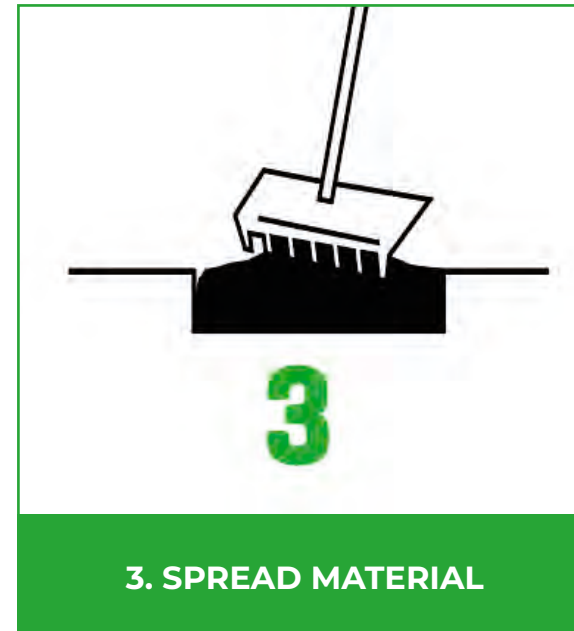
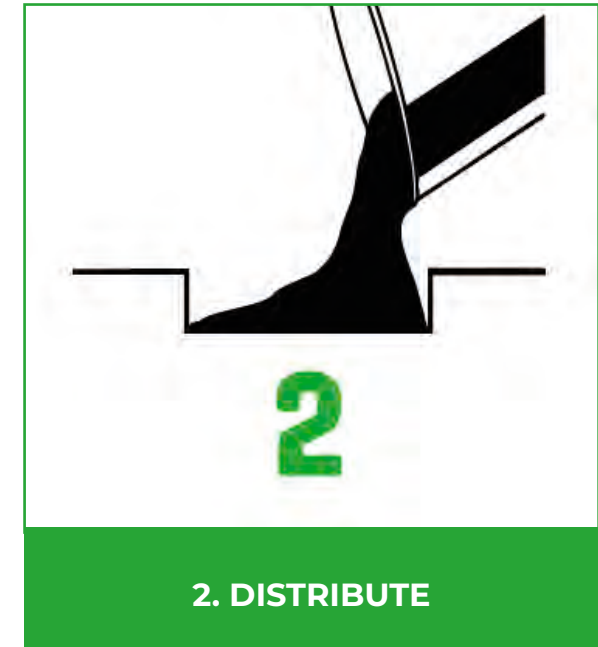
MATERIAL PROPERTIES	eka REPARATURASPHALT	WETTBEWERB REPARATURASPHALT
STORABILITY	MIN. 36 MONTHS	12 MONTHS
AMBIENT TEMPERATURE DURING PROCESSING	-20°C TO +50°C	+5 TO +35°C
CURE TIME	IMMEDIATELY PASSABLE (HIGH TRAFFIC LOAD ENSURES FASTER CURING)	10 - 20 DAYS
COMPACTION (IMPERMEABILITY)	96 %	max. 68 %
CE-CERTIFICATE	DIN EN 13108-1	NO REFERENCE KNOWN
CO2-FOOTPRINT PACKAGING	2,24g CO2 PER ECO-PACKAGING	32,20g CO2 PER PLASTIC BUCKET
FINAL ASPHALT CONDITION AND CHARACTER TRAIT	AC-11 or AC-5	INCOMPATIBLE
PATENT ES202031460U	BZW. PCT/BR2021/0PATENT ES202031460U BZW. PCT/BR2021/050272	-

PROCESSING INSTRUCTIONS



OUR work steps.

Please note further information in the product data sheet, as well as in the DIN safety sheet, or under:
www.eka-asphalt.de



PACKAGING SIZES



From smallest quantities
to large orders –
everything is possible!

15kg – ECO-BAGS



1.080kg – PACKED TO 72 ECO-BAGS ON A PALLET



500kg – BIG BAG



EXAMPLES OF USE



We show you,
how it looks like!

On the following pages you will find
reference pictures at our customers.

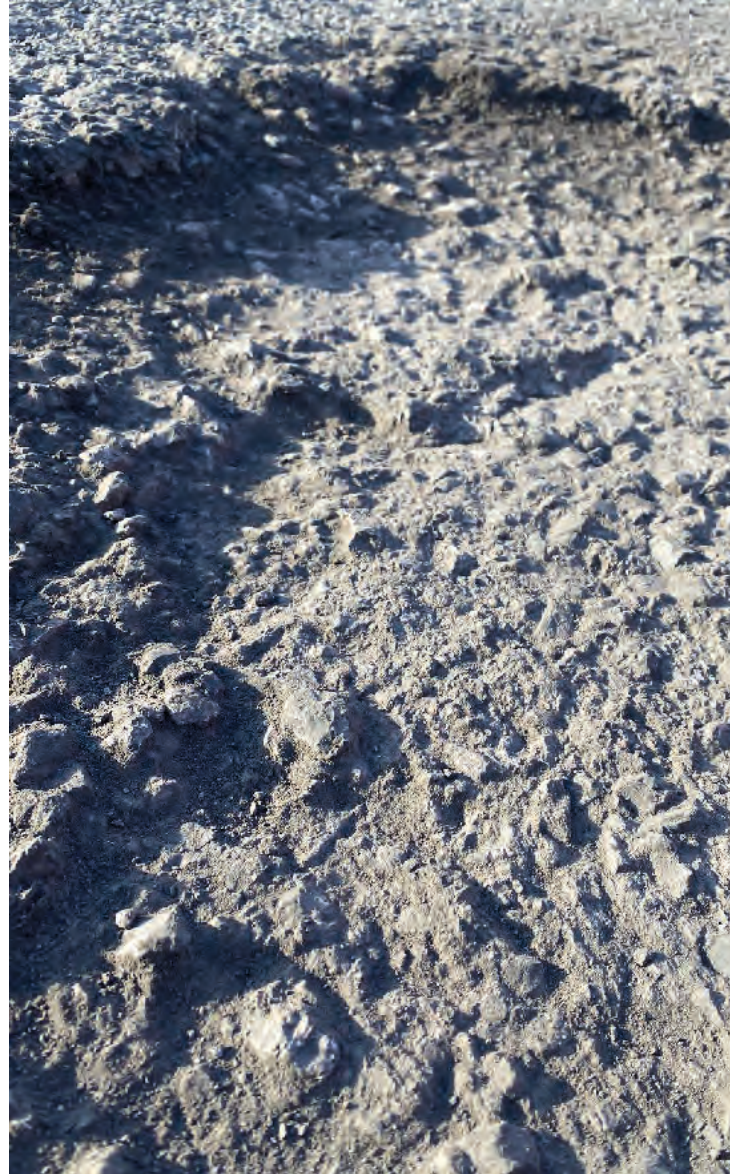


















CONTACT DATA



WEBSITE

info@eka-asphalt.de

www.eka-asphalt.de



PHONE

T +49.59 73.736 99 30



ADDRESS

eka GmbH
Emsdettener Str. 45
D-48485 Neuenkirchen





Thank you
for your attention!

**WOULD YOU LIKE MORE INFORMATION
ABOUT OUR PRODUCT?**

Feel free to contact us!

www.eka-asphalt.de